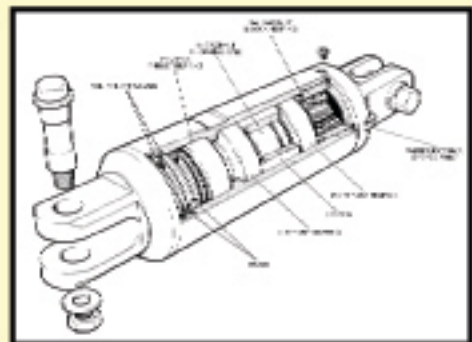
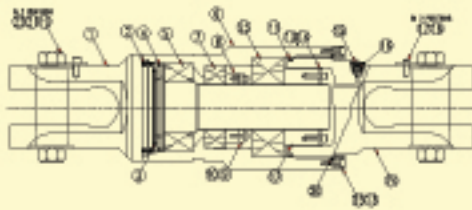


# Heavy Duty Pullback Swivels



## Heavy Duty Pullback Swivels

The final phase of Directional Drilling is pulling in the pipe. A Drilling Swivel is attached to the pipe string between the back reamer and towing head. This allows the reamer to rotate whilst the pipe does not.

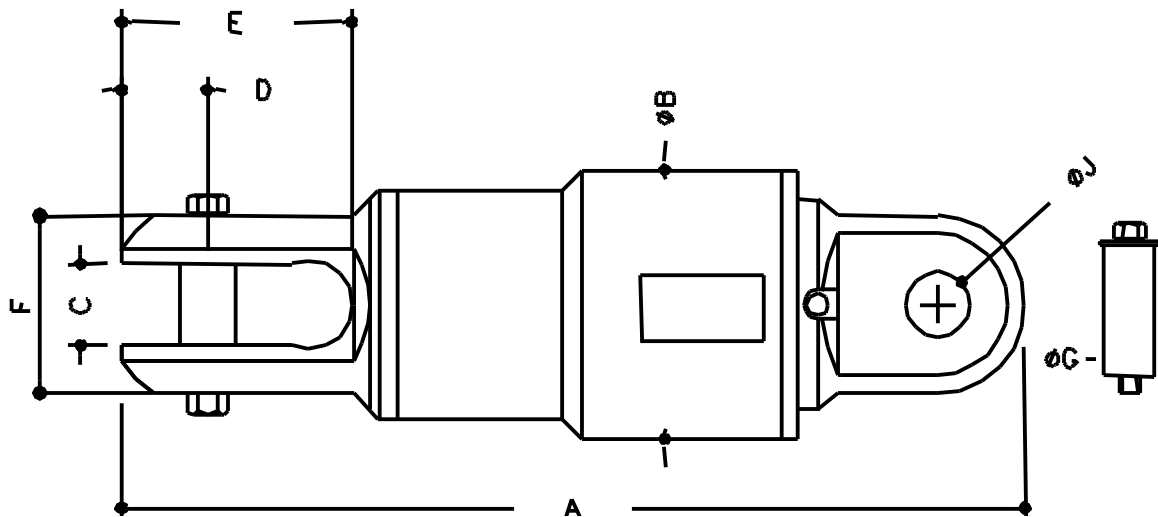
### Features -

-  Sizes from 8 to 400 US ton pullback load.
-  Patented sealing system keeps bentonite out but allows power greasing.
-  Side grease point to allow easier greasing.
-  Manufactured from AISI 4145 High Tensile steel.
-  One piece shaft / clevis gives maximum strength.
-  Unique three bearings design proven in the field over and over again.
-  Standard Clevis/clevis design.
-  API Box Connections and pad eyes available to order.
-  Universal Joint Kits can be made if required.



**Serious drillers use serious swivels ...**

# BREWIS SWIVEL DIMENSIONS



Dimension	A	B	C	D	E	F	G	J
	Overall Length	Maximum Diameter	Clevis Width Internal	Clevis Centre to End	Clevis Depth	Clevis Width External	Pin Max. Ø	Pin Clearance Ø

## METRIC DIMENSIONS - Millimetres

Metric Tonnes	A	B	C	D	E	F	G	J
P 6	351	70	27.0	34.8	73.6	69.9	21.9	22.0
r 11	407	83	27.0	41.7	90.1	82.6	21.9	22.0
a 14	419	96	27.0	35.0	80.9	70.0	26.5	27.0
l 20	483	111	36.0	41.3	101.1	82.5	31.3	31.8
e 27	538	127	46.0	47.6	113.0	95.3	37.5	38.0
B 36	606	144	46.0	52.5	131.5	105.0	44.0	44.5
o 50	715	160	52.0	63.5	156.5	127.0	51.3	52.0
y 73	746	178	58.0	70.0	175.0	140.0	60.0	60.7
90	846	225	64.3	76.0	198.5	152.0	61.5	62.2
136†	970	290	71.0	87.5	227.0	175.0	69.5	70.0
181	1168	343	77.0	101.6	260.0	203.0	76.0	76.5
250	1528	430	128.5	139.7	372.4	279.4	100.5	100.6
350	1810	490	155.0	170.0	450.0	340.0	150.5	151.0

## IMPERIAL DIMENSIONS - Inches

US Tons	A	B	C	D	E	F	G	J
P 8	13.82	2.75	1.06	1.37	2.90	2.75	0.86	0.87
r 12	16.02	3.25	1.06	1.64	3.55	3.25	0.86	0.87
a 15	16.50	3.78	1.06	1.38	3.19	2.76	1.04	1.06
l 20	19.02	4.37	1.42	1.63	3.98	3.25	1.23	1.25
e 30	21.18	5.00	1.81	1.87	4.45	3.75	1.48	1.50
B 40	23.86	5.67	1.81	2.07	5.18	4.13	1.73	1.75
o 55	28.15	6.30	2.05	2.50	6.16	5.00	2.02	2.05
y 75	29.37	7.01	2.28	2.76	6.89	5.51	2.36	2.39
100	33.31	8.86	2.53	2.99	7.81	5.98	2.42	2.45
150†	38.19	11.42	2.80	3.44	8.94	6.89	2.74	2.76
200	45.98	13.50	3.03	4.00	10.24	7.99	2.99	3.01
300	60.16	16.93	5.06	5.50	14.66	11.00	3.96	3.96
400	71.26	19.29	6.10	6.69	17.72	13.39	5.93	5.94

† - Ammended Feb 02